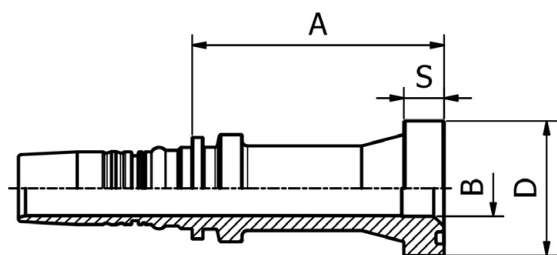


ORIGINAL EQUIPMENT CONNECTIONS

# M43910



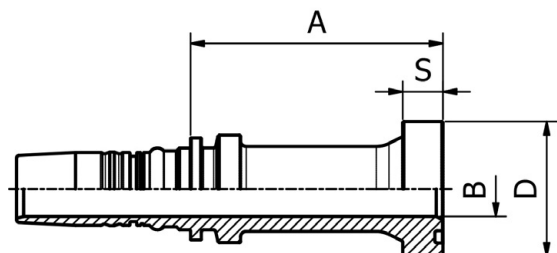
## STRAIGHT SUPERCAT SERIES FLANGE

PART. REF.	HOSE BORE			Flange	DIMENSIONS mm				
	DN	Dash	inch		B	A	D	S	
M43910-12-12	19	- 12	3/4"	3/4"	16.0	77.0	41.5	14.3	
M43910-12-16	19	- 12	3/4"	1"	20.0	88.5	47.7	14.3	
M43910-16-16	25	- 16	1"	1"	20.0	89.5	47.7	14.3	
M43910-16-20	25	- 16	1"	1.1/4"	26.0	93.5	54.0	14.3	
M43910-20-20	31	- 20	1.1/4"	1.1/4"	26.1	95.0	54.0	14.3	
M43910-20-24	31	- 20	1.1/4"	1.1/2"	32.1	98.5	63.6	14.3	
M43910-24-24	38	- 24	1.1/2"	1.1/2"	32.1	99.0	63.6	14.3	
M43910-24-32	38	- 24	1.1/2"	2"	42.0	115.0	79.3	14.3	
M43910-32-24	51	- 32	2"	1.1/2"	32.1	119.5	63.6	14.3	
M43910-32-32	51	- 32	2"	2"	42.0	114.5	79.3	14.3	

FITTINGS 202

ORIGINAL EQUIPMENT CONNECTIONS

# M43910CT



## STRAIGHT REALCAT FLANGE

PART. REF.	HOSE BORE			Flange	DIMENSIONS mm				
	DN	Dash	inch		B	A	D	S	
M43910-16-16CT	25	- 16	1"	1"	19.5	89.5	47.7	14.3	
M43910-20-20CT	31	- 20	1.1/4"	1.1/4"	25.0	95.0	54.0	14.3	
M43910-20-24CT	31	- 20	1.1/4"	1.1/2"	31.0	98.0	63.6	14.3	
M43910-24-24CT	38	- 24	1.1/2"	1.1/2"	31.0	99.0	63.6	14.3	