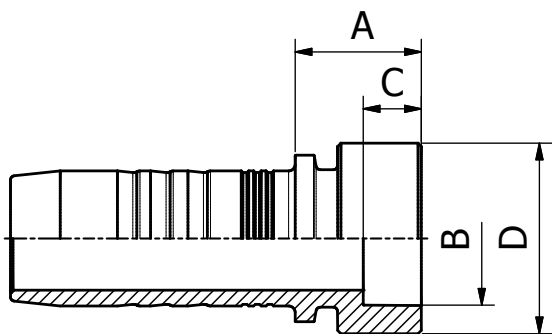


TAIL

M..IP..

WELDING TAIL



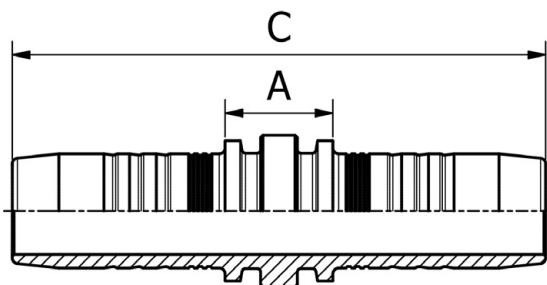
PART. REF.	HOSE BORE			PART. REF.	PART. REF.	DIMENSIONS mm						
	DN	Dash	inch			B	A	C	D			
M03IP06	5	- 3	3/16"			6.0	11.5	5.0	10.0			
M04IP08	6	- 4	1/4"			8.0	13.0	5.0	12.0			
M05IP10	8	- 5	5/16"			10.0	13.5	6.0	14.0			
M06IP12	10	- 6	3/8"			12.0	13.5	6.0	16.0			
M06IP14	10	- 6	3/8"			14.0	13.5	6.0	18.0			
M08IP15	12	- 8	1/2"			15.0	14.0	6.0	20.0			
M08IP16	12	- 8	1/2"			16.0	14.0	6.0	20.0			
M10IP18	16	- 10	5/8"			18.0	15.0	7.0	23.0			
M12IP22	19	- 12	3/4"			22.0	16.0	7.0	26.0			
M16IP28	25	- 16	1"			28.0	18.5	8.0	34.0			
M20IP35	31	- 20	1.1/4"			35.0	20.5	9.0	40.0			
M24IP40	38	- 24	1.1/2"			40.0	21.5	9.0	50.0			
M32IP50	51	- 32	2"			50.0	23.0	10.0	60.0			
M40IP60	63	- 40	2.1/2"			61.0	19.0	7.0	73.0			
M48IP70	76	- 48	3"			70.0	38.0	10.0	89.0			

FITTINGS 172

DOUBLE CONNECTOR

M10050

DOUBLE CONNECTOR



PART. REF.	HOSE BORE			PART. REF.	PART. REF.	DIMENSIONS mm						
	DN	Dash	inch			B	A	C				
M10050-03-03	5	- 3	3/16"			3.0	15.5	58.2				
M10050-04-04	6	- 4	1/4"			4.0	14.0	69.0				
M10050-05-05	8	- 5	5/16"			5.5	14.0	70.0				
M10050-06-06	10	- 6	3/8"			7.0	14.5	73.5				
M10050-08-08	12	- 8	1/2"			9.3	15.5	77.9				
M10050-10-10	16	- 10	5/8"			12.5	15.5	84.0				
M10050-12-12	19	- 12	3/4"			15.0	18.5	91.5				
M10050-16-16	25	- 16	1"			19.8	22.5	119.0				
M10050-20-20	31	- 20	1.1/4"			26.0	23.0	128.1				
M10050-24-24	38	- 24	1.1/2"			32.0	23.5	147.5				