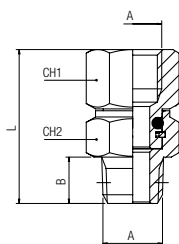


## 2110

### NIPPLO CONICO ORIENTABILE

ORIENTING NIPPLE (TAPER)  
SCHWENKNIPPEL KONISCH  
MAMELON ORIENTABLE, CONIQUE  
UNIÓN CÓNICA ORIENTABLE  
NIPLE ORIENTÁVEL COM ROSCA CÔNICA



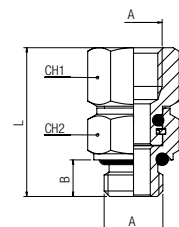
Code	A	B	CH1	CH2	L	Pack.
02110 00 001	1/8	7.5	13	13	25	10
02110 00 002	1/4	11	16	15	33	10
02110 00 003	3/8	11.5	20	17	35.5	10

	min	max
<b>Temperature</b>	- 20 °C	+ 80 °C
<b>Pressure</b>	- 0.99 bar (-0.099 MPa)	+ 15 bar (1.5 MPa)

## 2115

### NIPPLO CILINDRICO ORIENTABILE

ORIENTING NIPPLE (PARALLEL)  
SCHWENKNIPPEL ZYLINDRISCH  
MAMELON ORIENTABLE, CYLINDRIQUE  
UNIÓN CILÍNDRICA ORIENTABLE CON TÓRICA  
NIPLE ORIENTÁVEL COM ROSCA PARALELA



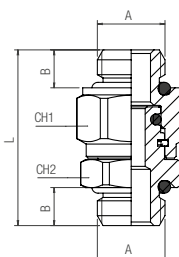
Code	A	B	CH1	CH2	L	Pack.
02115 00 001	1/8	6	13	13	24.5	10
02115 00 002	1/4	8	16	16	31	10
02115 00 003	3/8	9	20	18	34.5	10

	min	max
<b>Temperature</b>	- 20 °C	+ 80 °C
<b>Pressure</b>	- 0.99 bar (-0.099 MPa)	+ 15 bar (1.5 MPa)

## 2116

### NIPPLO MASCHIO CILINDRICO ORIENTABILE CON OR

MALE ORIENTING NIPPLE WITH OR (PARALLEL)  
DOPPELNIPPEL ZYLINDRISCH EINSTELLBAR  
MAMELON DOUBLE ORIENTABLE BSPP AVEC JOINT TORIQUE  
UNIÓN MACHO CILÍNDRICO ORIENTABLE CON OR  
NIPLE MACHO ROSCA PARALELA ORIENTÁVEL COM O-RING



Code	A	B	L	CH1	CH2	Pack.
02116 GI 001	1/8	5.5	25	14	13	10
02116 GI 002	1/4	7	29	17	16	10
02116 GI 003	3/8	8	33	20	20	10
02116 GI 004	1/2	9.5	37	25	25	10
02116 GI 005	3/4	11	48.5	34	34	10
02116 GI 006	1"	12	52	40	40	10

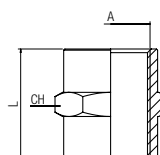
Articolo non nichelato.  
Article not nichel-plated.  
Artikel nicht vernickelt.  
Article non nickelé.  
Artículo no niquelado.  
Item não niquelado.

	min	max
<b>Temperature</b>	- 20 °C	+ 80 °C

## 3000

### MANICOTTO

SLEEVE  
MUFFE  
MANCHON  
MANGUITO  
LUVÁ



Code	A	L	CH	Pack.
03000 00 01 B5 NB M5		11	8	10
03000 00 01 02 NB 1/8		15	14	10
03000 00 01 03 NB 1/4		22	17	10
03000 00 01 04 NB 3/8		24	22	10
03000 00 01 05 NB 1/2		30	26	10
03000 00 01 07 NB 3/4		32	32	10
03000 00 01 09 NB 1"		46	40	10