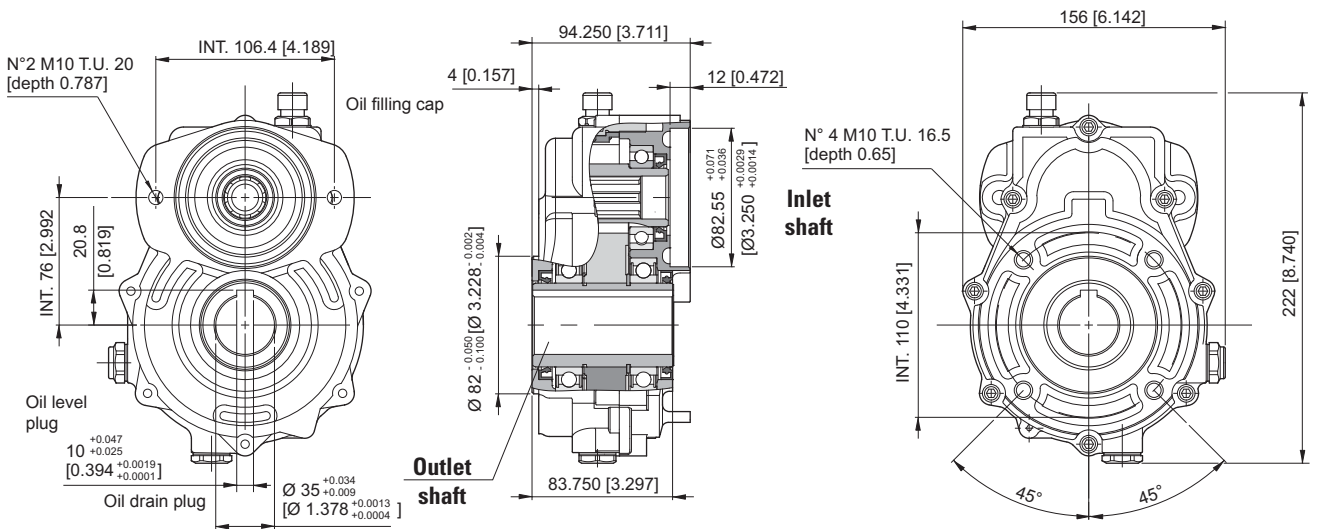
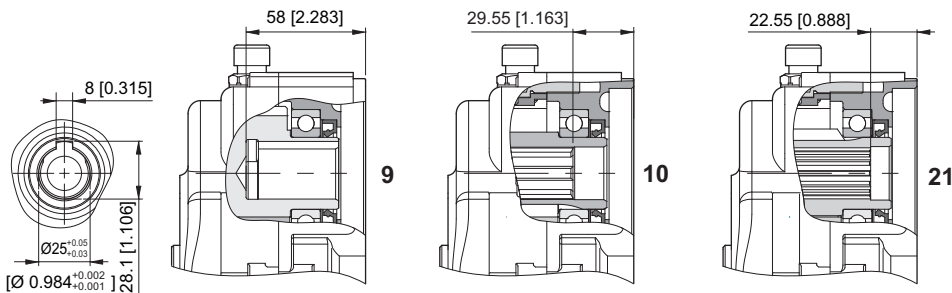


## SPEED REDUCER GEARBOX SAE A

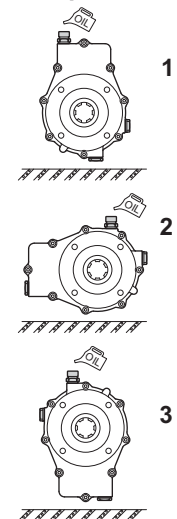


mm [inches]

### Inlet shaft



### Mounting positions



## ORDERING CODE

RD42/SAE - \* -1/ \*\*\* - \*\* - \*

RD42/SAE = Speed reducers (cast iron body)

**Output shaft**  
4 = Female Ø 35 mm

**Transmission ratio**  
0,66 = 1.5 : 1  
0,33 = 3.0 : 1  
0,29 = 3.4 : 1

**Mounting positions**  
1 / 2 / 3

**Input shaft**  
9 = Female Ø 25 \*  
10 = Female SAE 6B  
21 = Female Z14 DIN 5482 (25x22)

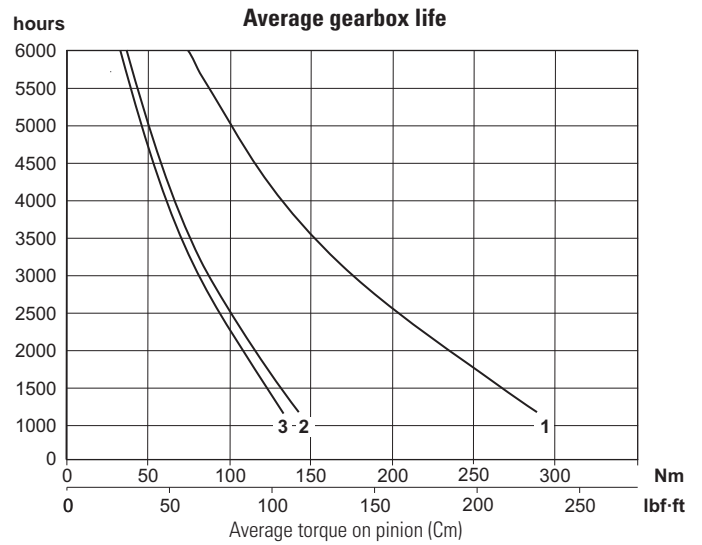
\* Only for transmission ratio: 0.66 - 0.50 - 0.40 - 0.33

Coupling for pump to be required to our sales department.

## TECHNICAL DATA

Transmission ratio	Maximum torque Nm [lbf-ft]		Weight kg [lb]
	200 rpm		
	C1*	C2*	
<b>0.66</b>	289 [213]	152 [112]	7,8 [17.2]
<b>0.33</b>	142 [105]	75 [55]	8,3 [18.3]
<b>0.29</b>	133 [98]	70 [52]	8,5 [18.7]

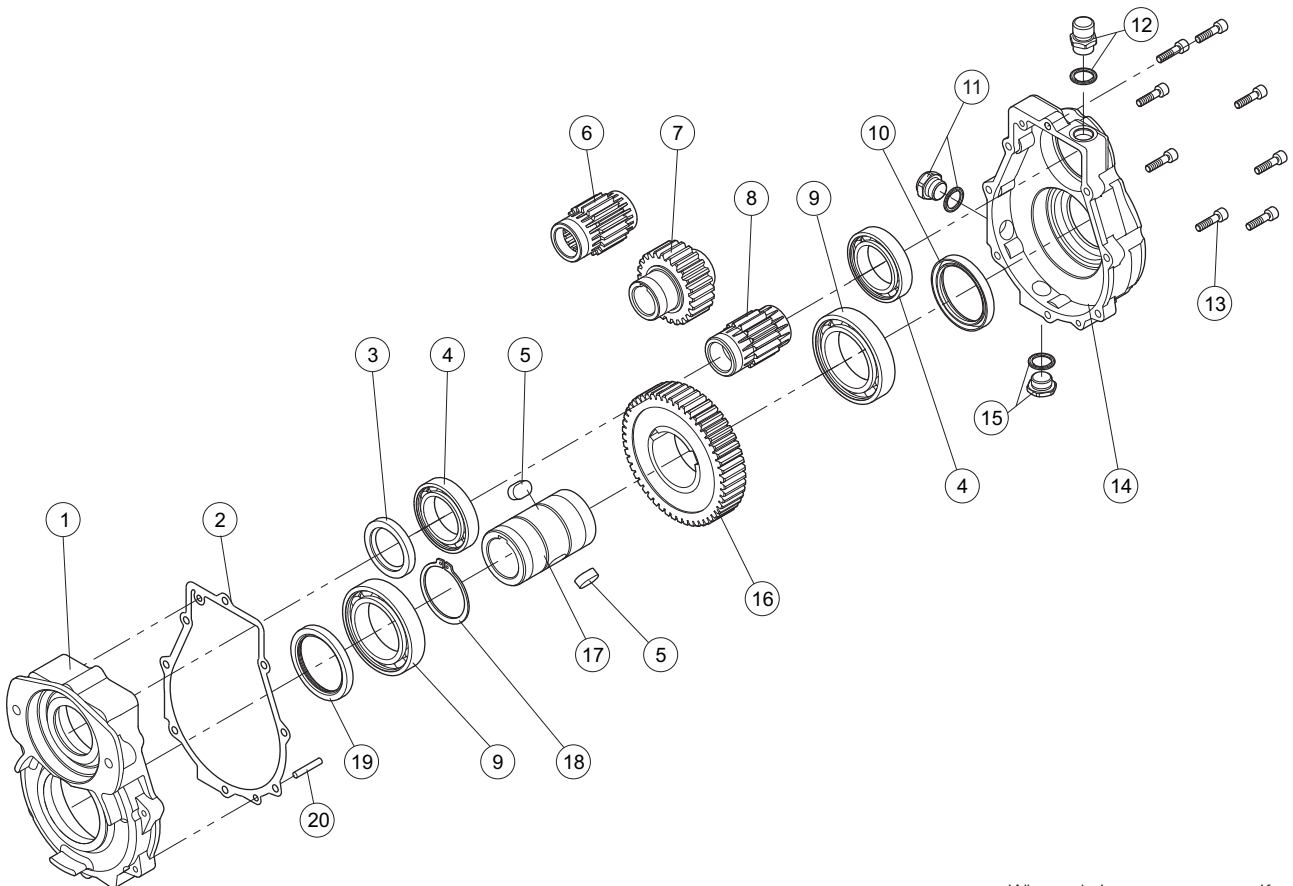
\* Maximum torque on pump:  
C1= maximum starting torque; C2= maximum torque for continuous duty.



Mounting positions	Oil liters [US gallon]
<b>1</b>	0.15 [0.04]
<b>2</b>	0.11 [0.03]
<b>3</b>	0.09 [0.02]

Output rpm	Input (transmission ratio)		
	0.66	0.33	0.29
<b>200</b> curve	1	2	3
rpm	300	600	700

## SPARE PARTS



When ordering spare parts, specify reference number, gearbox model, PTO type and transmission ratio.